

Nüyek.

H=108

3.15

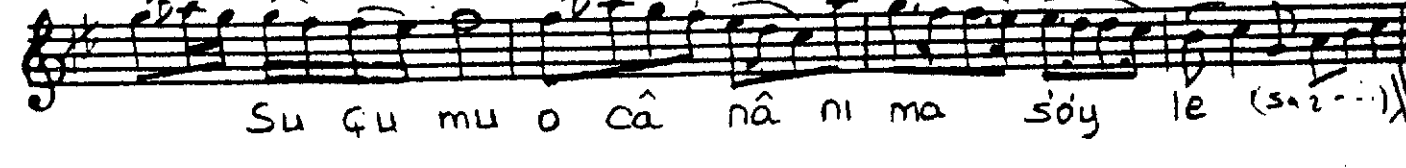
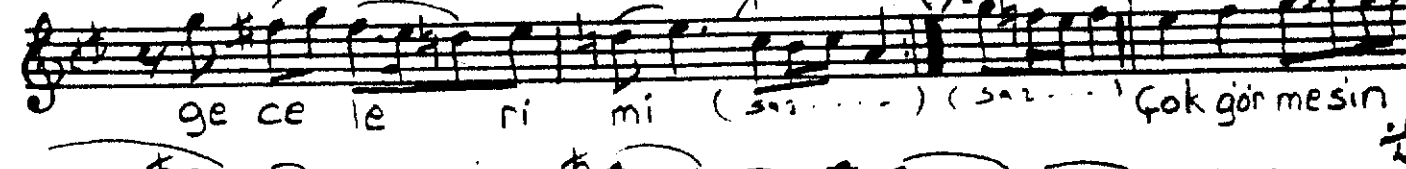
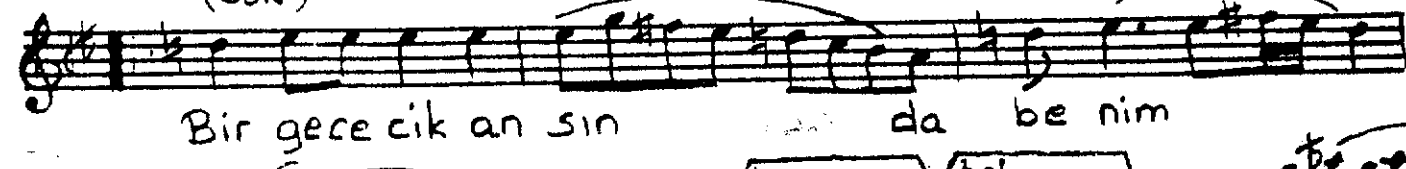
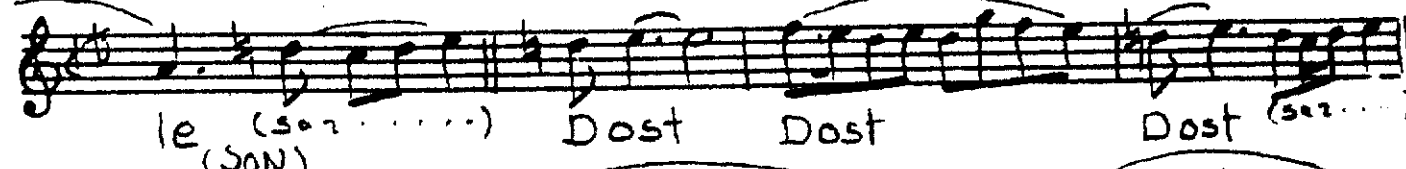
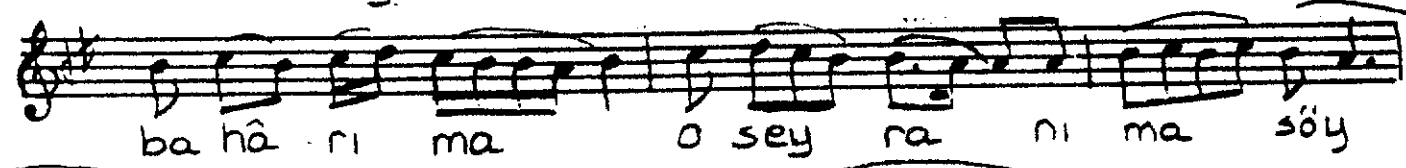
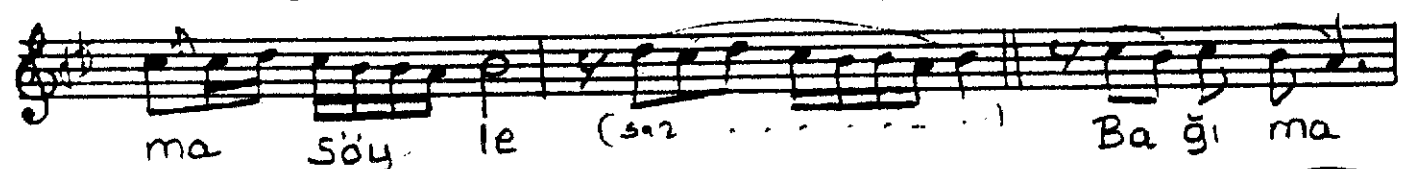
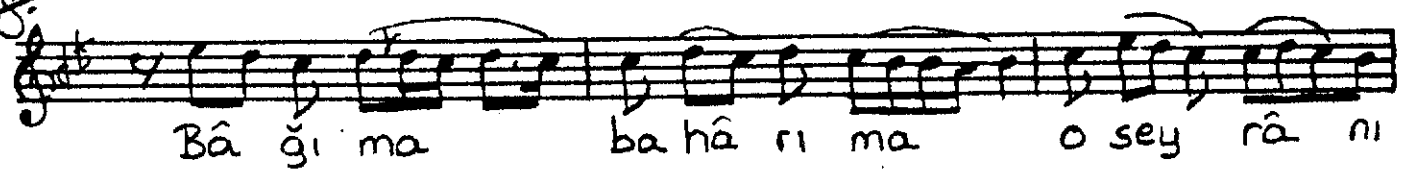
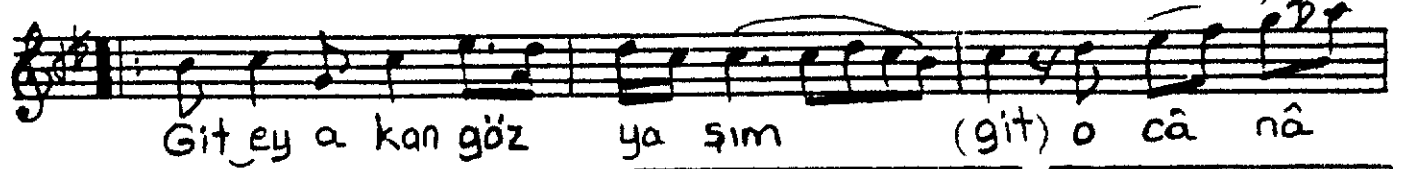
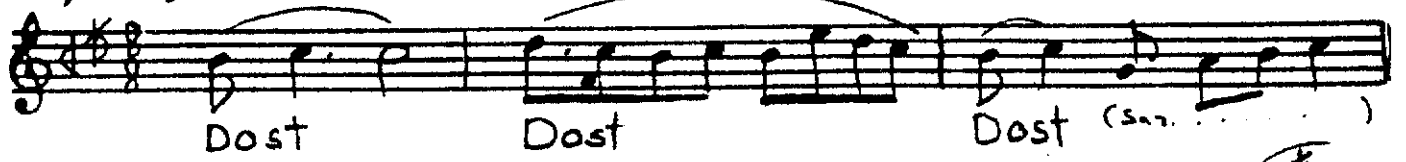
SABÂ ILÂHÎ

(Git ey akan göz yasım...)

Beste: M. Nurettin...

Güfte: Hz. Mevlâna

Manzum tercemesi: M. Nuri Gençosmar



Git ey akan göz yasım (git) o cânânıma söyle
Bâ ği ma bahârıma o seyrânıma söyle
Bir gececik ansın da benim gecelerimi
Çok gör mesin suçumu o cânânıma söyle